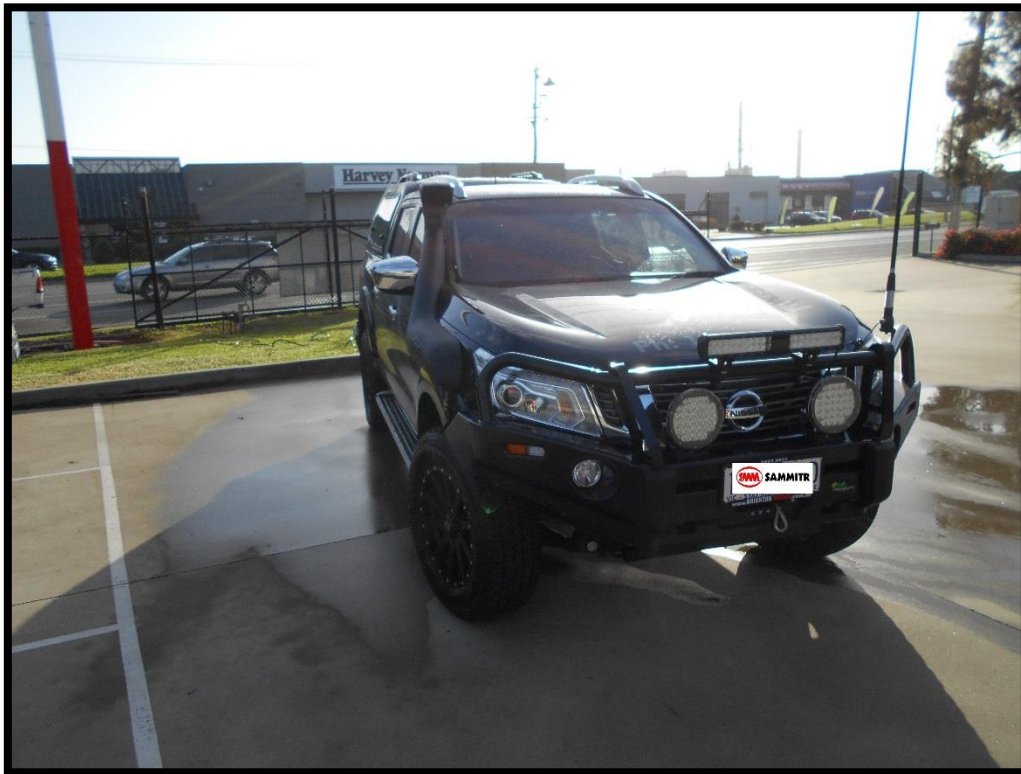


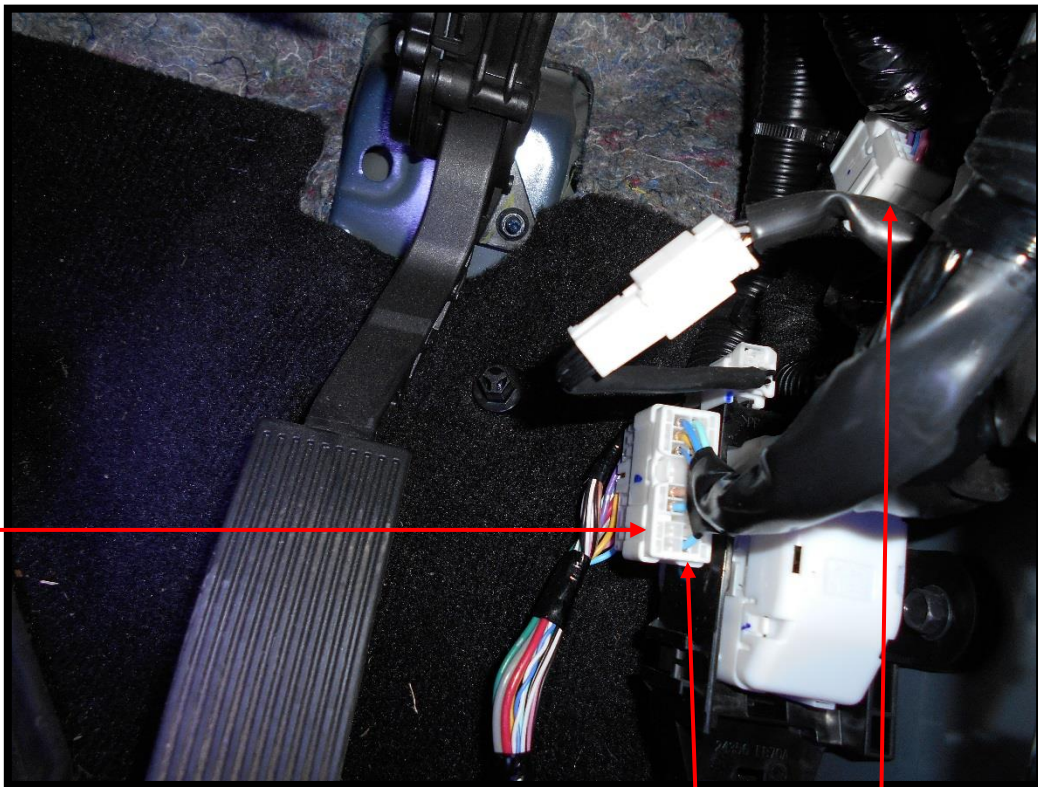


WIRING INSTRUCTIONS

SMM Steel Canopy V2 NISSAN NAVARA NP300 2016+



FUNCTION	CANOPY WIRING	VEHICLE WIRING
Constant Power(Dome Light)	Red	Pink (Plug B)
Rear Demister	Yellow/Red	Light Blue (Plug A)
Central Locking(Lock)	Blue	Brown (Plug A)
Central Locking(Unlock)	Green	Light Blue (Plug A)
Earth	Black	Black (Plug B)
Brake Light	Red	Yellow (Plug C)
Earth	Black	Grey (Plug C)

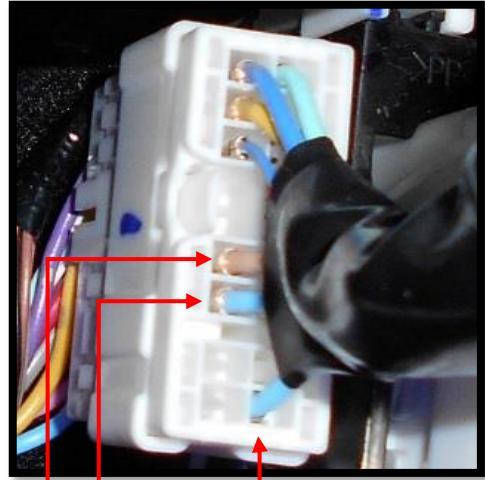


Plug A Plug B

- Plug A & Plug B is located at the front of the vehicle on the driver's side behind the kick panel.
- Plug C is located behind the tail light on the driver's side.
- On some models the constant power (dome lamp) and earth are located in plug A.

White (Constant power) and Black (Earth)

Plug A

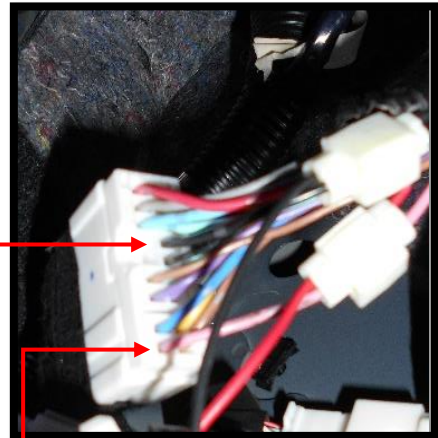


Blue to Brown (Central Locking- Lock)

Green to Light Blue (Central Locking- Unlock)

Yellow/Red to Light Blue (Rear Demister)

Plug B

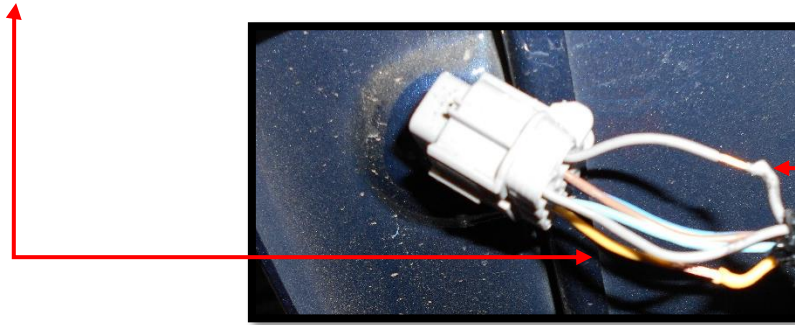


Black to Black (Earth)

Red to Pink (Constant Power-Dome light)

Plug C

Red to Yellow (Brake Light)



Black to Grey (Earth)

Running the loom.

- You will find an opening with a grommet sealing it under the driver's seat to run the loom out under the driver's seat. Then run the loom to the rear of the vehicle behind the tail light.



- Alternatively, if there is no opening you can run the loom inside the vehicle to behind the back seat on the driver's side. There is a vent between the cabin and the tub you can run the loom through.

PLEASE NOTE

- Avoid drilling holes in the vehicle. There are always openings into the cabin underneath the vehicle or at the rear.
- Using a L.E.D test light, test all electrical components of the vehicle before and after wiring the canopy to ensure that everything works correctly.
- Ensure you replace all vehicle trim and return the vehicle interior back to how it was found.